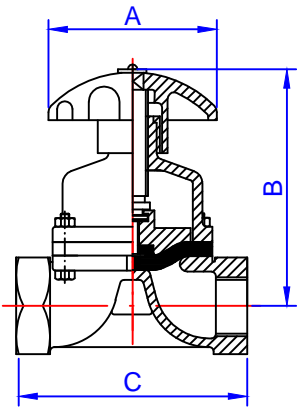
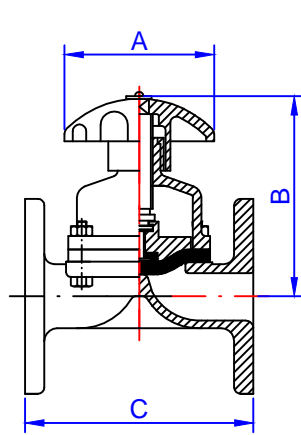


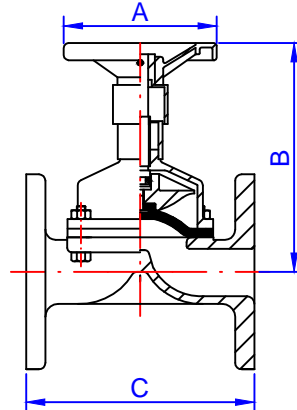
Válvulas de passagem Angular - Tipo P



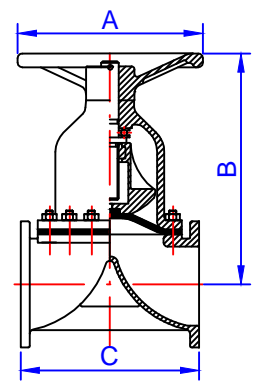
Roscadas Ø1/4" a 3"



Flangeados Ø1/2" a 1.1/4"



Flangeados Ø 1.1/2" a 6"



Flangeados Ø 8" a 14"

Dimensão "C" (mm)

Conexão	Bitola															
	1/4"	1/2"	3/4"	1"	1.1/4"	1.1/2"	2"	2.1/2"	3"	4"	5"	6"	8"	10"	12"	14"
Rosca	50	66	83	108	124	137	160	203	254							
Flange s/ revestimento		102	118	127	146	159	191	216	254	305	356	406	521	635	749	749
Flange Rev. Vidro		104	120	129	148	161	193	218	256	307	358	408	523	637	751	751
Flange Rev. Borracha			121	130	149	162	194	219	257	308	362	412	527	641	757	757
Tolerância "C" †		1	1	1	1	1	1	2	2	2	3	3	3	3	3	3

Dimensão "A"		70	70	95	95	130	130	170	220	280	330	330	400	580	700	700
--------------	--	----	----	----	----	-----	-----	-----	-----	-----	-----	-----	-----	-----	-----	-----

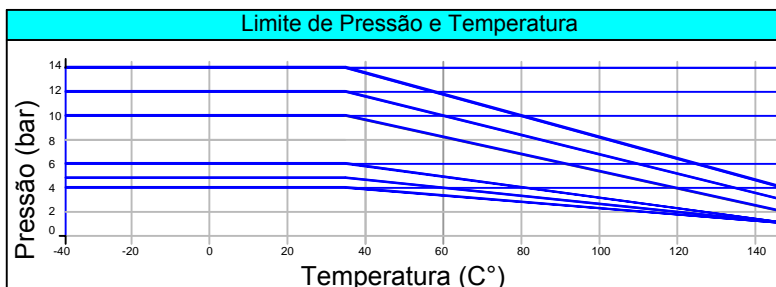
Dimensão "B" - Flange		89	101	120	148	164	193	210	229	365	410	476	475	690	763	790
Dimensão "B" - Rosca	70	92	104	123	151	164	196	213	232							

Peso (KG) - Flange		2,0	2,9	3,0	5,0	6,0	9,0	15,0	21,0	33,0	50,0	60,0	152,0	292,0	344,0	368,0
Peso (KG) - Rosca	0.3	0.8	1,0	1,4	2,5	3,5	6,0	9,5	15,0							

Pressões Máximas de Trabalho para Comandos manuais

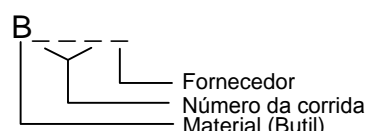
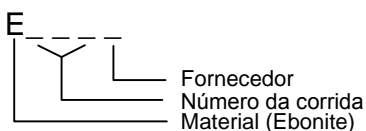
Material	Bitola	1/4"	1/2"	3/4"	1"	1.1/4"	1.1/2"	2"	2.1/2"	3"	4"	5"	6"	8"	10"	12"	14"
Borracha		14	14	14	14	14	14	14	12	10	10	10	10	6	5	4	4
PTFE			10	10	10	10	10	10	10	10	10	10	10	5	4		

Nota: As medidas da dimensão "B" correspondem a válvula aberta



Diafragmas		
Materiais	Temp (C°)	Código
Borracha Natural	80	X
Butil	80	B
EPDM	90	D
EPDM-150	150	DS
Hypalon	100	H
Neoprene	100	N
Nitrilica	100	L
PTFE/EPDM	120	PD
PTFE/Viton	150	PV
Viton	140	V
PTFE/ Pressado	100	

Corpos		
Materiais	Temp (C°)	Código
FF (Ferro Fundido)	140	
FF / Vidro	140	
FF / Hallar	140	
FF / FEP	150	
FF / PP	100	
FF / PFA	100	
FF / Ebonite	90	E
FF / Butil	100	B
FF / Borracha Natural	80	X
FF / Neoprene	100	N



Esquema de identificação do Diafragma Esquema de identificação do Corpo

Obs°: Revestimento de vidro e plástico são identificados pela própria característica. Outros revestimentos sob consulta.